

WC-Sitz Antao SC/QR



Model

8M67S1 Antao toilet seat with Soft Closing and Quick Release, incl. 9221 22 61 hinge

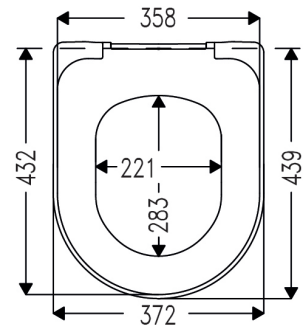
Product Description

Antao toilet seat in Wrap Over design made of colour ingrained duroplast:

- incl. hinge with Quick Release in stainless steel
- centre distance: 180 mm
- load of ring seat: 240 kg
- 10 years guarantee

Colour Programme

R1 White
RW Stone White
R7 Pure Black
AM Almond
R8 Morning Green

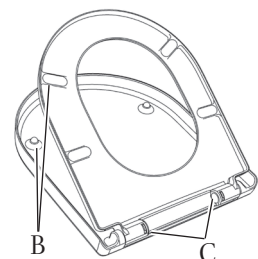
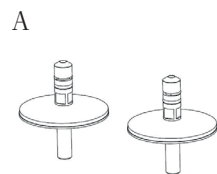


Hinge Finish

61 Stainless steel

Spare Parts

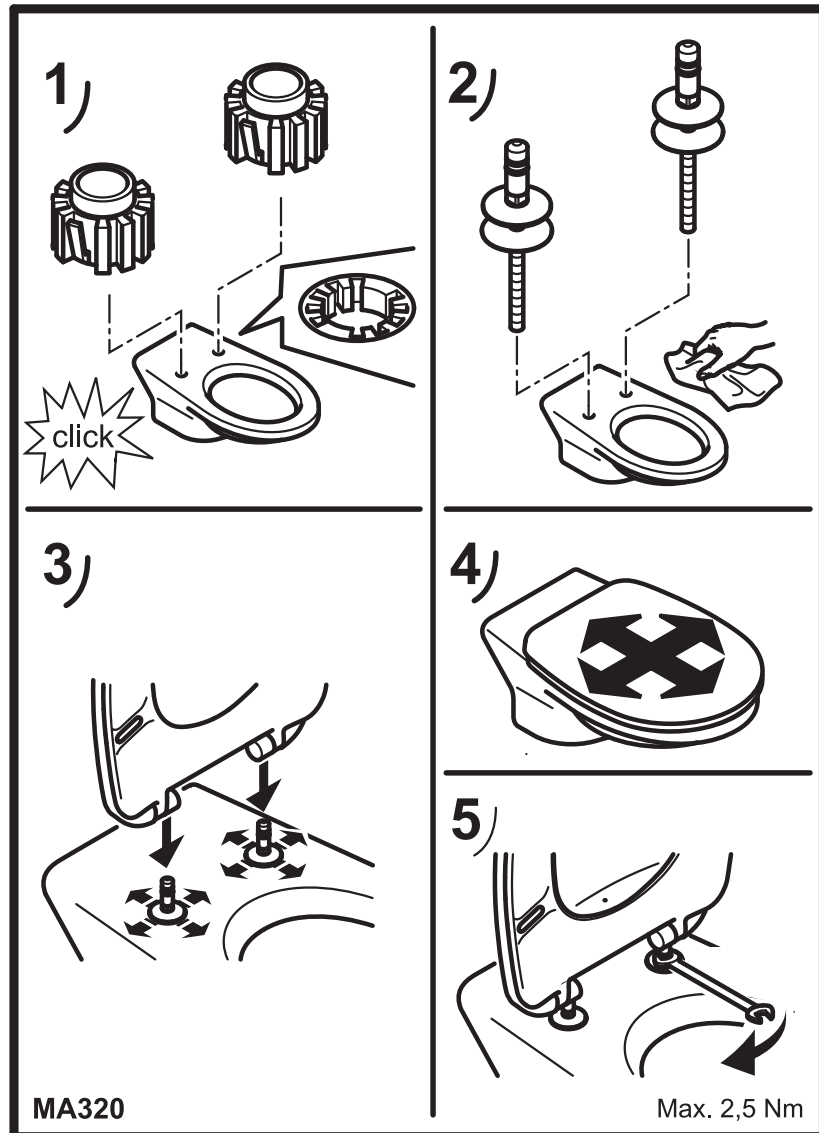
A) 9221 22 61 Hinge with Quick Release in stainless steel and nylon
B) 9221 34 00 Buffer for seat and cover grey
B) 9221 34 36 Buffer for seat and cover black
C) 9209 97 00 Soft Closing packet



Cleaning Instructions

Use a mild soap solution. Seat and hinges should not be left damp, but be dried with a soft cloth. When using abrasive, corrosive or chlorine based cleaners for the bowl, avoid contact with seat and hinges as it may lead to damages or flash rust. Therefore, when cleaning the bowl, make sure that seat and cover are in an upright position until all the cleaner has been flushed away.

Installation Instructions



Material Description

TOILET SEAT: The material is colour ingrained duroplast (UF A 10 = urea formaldehyde) that contains no environmentally hazardous substances. The body consists of approx. 50% urea (NH_2CONH_2), approx. 25% cellulose and approx. 25% formaldehyde (HCHO), as well as small amounts of various fillers and additives

BUFFERS: PE (Polyethylene)

DAMPER KIT: Hydraulic damper with stainless steel damper casing and plastic parts

DAMPER LIQUID: Anti-friction liquid

HINGES: Stainless steel and nylon

Guarantee

The guarantee includes faults or defects in the material of our products within a period of 10 years. Products subject to minor technical modifications and design deviations E. & O.E.