


CR10-06 (415V,2.2kW,35-60m)

Contents:

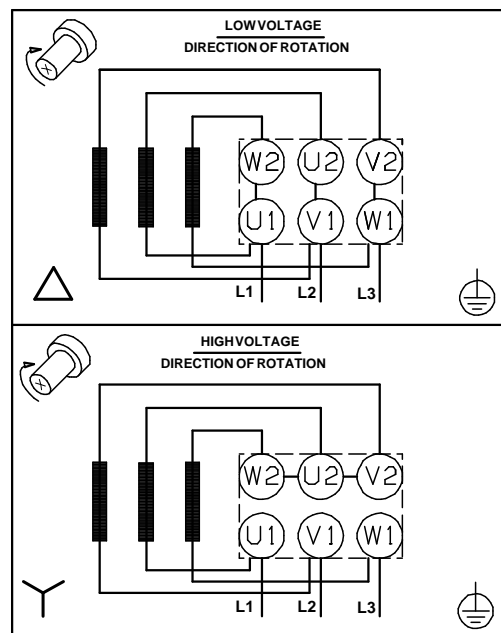
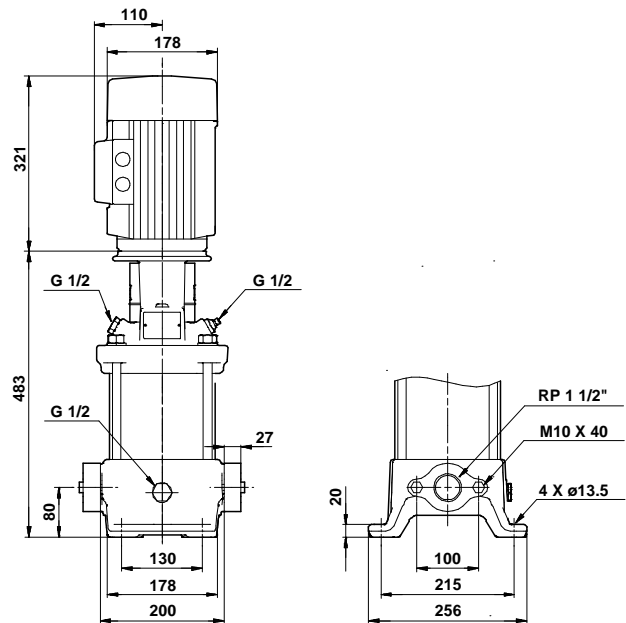
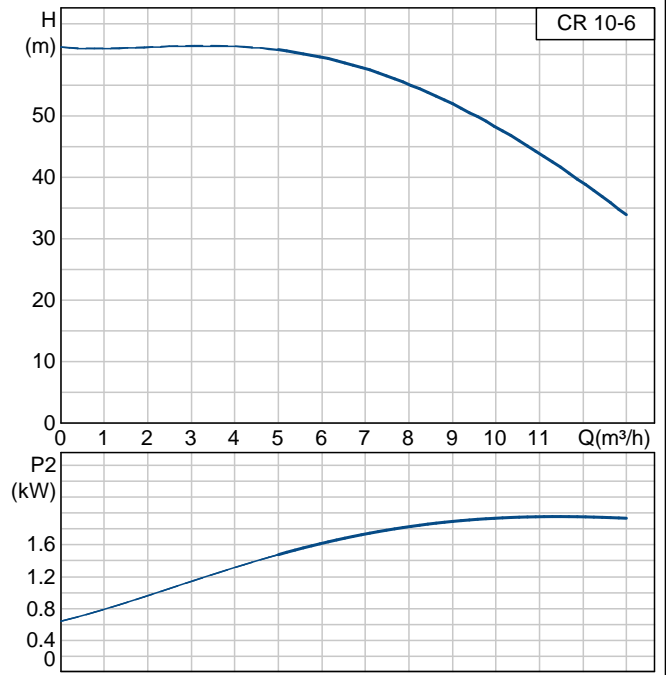
CR 10-6 (96500984)	2
Quotation text	2
Quotation text incl. photo	3
Data sheet incl. curve	5
Pump curve	6
Dimensional drawing	7
Wiring diagram	8

Position	Qty.	Description	Single Price
	1	<p>CR 10-6 A-A-A-E HQQE Product No.: 96500984 Vertical, non-self-priming, multistage, in-line, centrifugal pump for installation in pipe systems and mounting on a foundation.</p> <p>The pump has the following characteristics:</p> <ul style="list-style-type: none"> - Impellers and intermediate chambers are made of Stainless steel DIN W.-Nr. 1.4301 DIN W.-Nr.. - Pump head and base are made of Cast iron. - The shaft seal has assembly length according to EN 12756. - Power transmission is via cast iron split coupling. - Pipework connection is via Oval flanges. <p>The motor is a 3-phase AC motor.</p> <p>Liquid: Liquid temperature range: -20 .. 120 °C</p> <p>Technical: Speed for pump data: 2899 rpm Rated flow: 10 m³/h Rated head: 48.3 m Shaft seal: HQQE Approvals on nameplate: CE Curve tolerance: ISO 9906 Annex A</p> <p>Materials: Pump housing: Cast iron EN-JL1030 DIN W.-Nr. A48-30 B ASTM Impeller: Stainless steel 1.4301 DIN W.-Nr. 304 AISI</p> <p>Installation: Maximum ambient temperature: 60 °C Max pressure at stated temp: 16 / 120 bar / °C 16 / -20 bar / °C Flange standard: Oval Pipe connection: Rp 1 1/2 Flange size for motor: FT115</p> <p>Electrical data: Motor type: 90LC Efficiency class: 1 Number of poles: 2 Rated power - P2: 2.2 kW Power (P2) required by pump: 2.2 kW Mains frequency: 50 Hz Rated voltage: 3 x 220-240 D / 380-415 Y V Rated current: 7.7 / 4.45 A Starting current: 850-950 % Cos phi - power factor: 0,89-0,87 Rated speed: 2890-2910 rpm Enclosure class (IEC 34-5): IP55 Insulation class (IEC 85): F</p> <p>Others: Net weight: 47 kg Gross weight: 51 kg Shipping volume: 0.1 m³</p>	Price on request

Position	Qty.	Description	Single Price
	1	<p data-bbox="296 161 564 190">CR 10-6 A-A-A-E HQQE</p>  <p data-bbox="683 589 1219 618">Note! Product picture may differ from actual product</p> <p data-bbox="296 645 810 757">Product No.: 96500984 Vertical, non-self-priming, multistage, in-line, centrifugal pump for installation in pipe systems and mounting on a foundation.</p> <p data-bbox="296 786 807 815">The pump has the following characteristics:</p> <ul data-bbox="333 817 911 1043" style="list-style-type: none"> - Impellers and intermediate chambers are made of Stainless steel DIN W.-Nr. 1.4301 DIN W.-Nr.. - Pump head and base are made of Cast iron. - The shaft seal has assembly length according to EN 12756. - Power transmission is via cast iron split coupling. - Pipework connection is via Oval flanges. <p data-bbox="296 1075 663 1104">The motor is a 3-phase AC motor.</p> <p data-bbox="296 1133 379 1162">Liquid:</p> <p data-bbox="296 1164 798 1193">Liquid temperature range: -20 .. 120 °C</p> <p data-bbox="296 1223 419 1252">Technical:</p> <p data-bbox="296 1254 861 1420">Speed for pump data: 2899 rpm Rated flow: 10 m³/h Rated head: 48.3 m Shaft seal: HQQE Approvals on nameplate: CE Curve tolerance: ISO 9906 Annex A</p> <p data-bbox="296 1449 411 1478">Materials:</p> <p data-bbox="296 1480 908 1646">Pump housing: Cast iron EN-JL1030 DIN W.-Nr. A48-30 B ASTM Impeller: Stainless steel 1.4301 DIN W.-Nr. 304 AISI</p> <p data-bbox="296 1677 435 1706">Installation:</p> <p data-bbox="296 1709 839 1879">Maximum ambient temperature: 60 °C Max pressure at stated temp: 16 / 120 bar / °C 16 / -20 bar / °C Flange standard: Oval Pipe connection: Rp 1 1/2 Flange size for motor: FT115</p> <p data-bbox="296 1908 472 1937">Electrical data:</p> <p data-bbox="296 1939 740 2107">Motor type: 90LC Efficiency class: 1 Number of poles: 2 Rated power - P2: 2.2 kW Power (P2) required by pump: 2.2 kW Mains frequency: 50 Hz</p>	Price on request

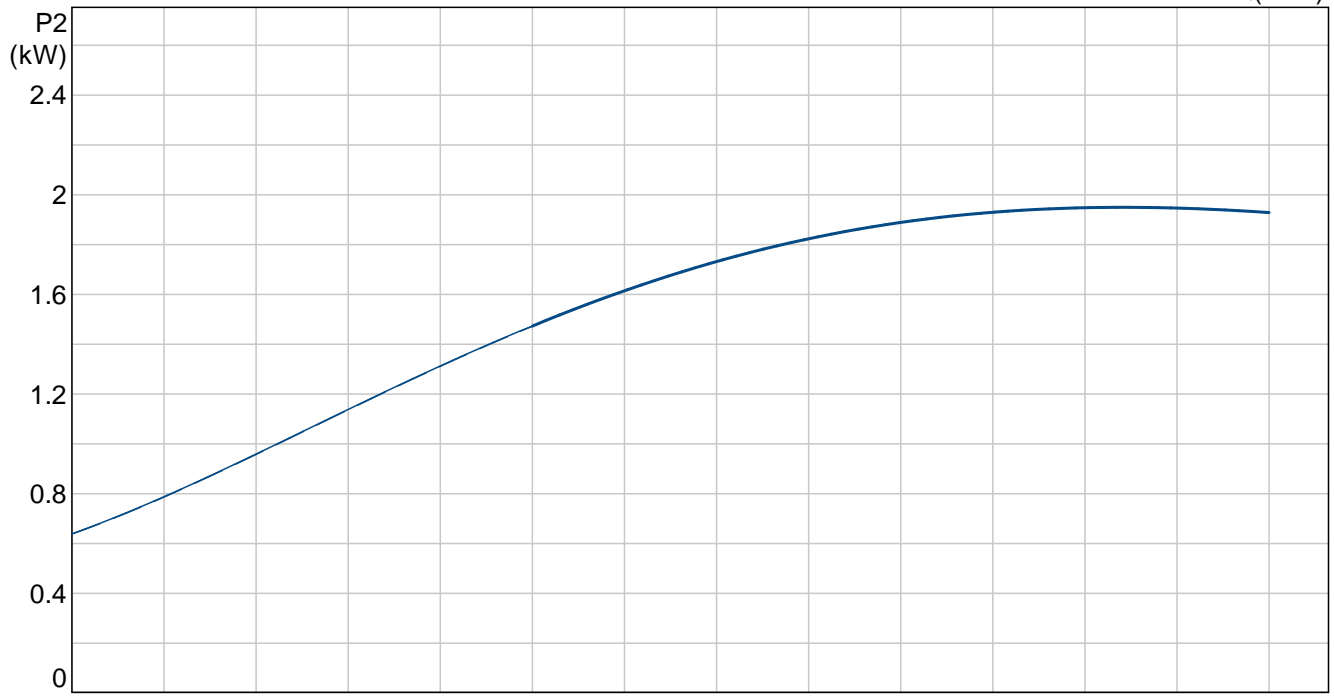
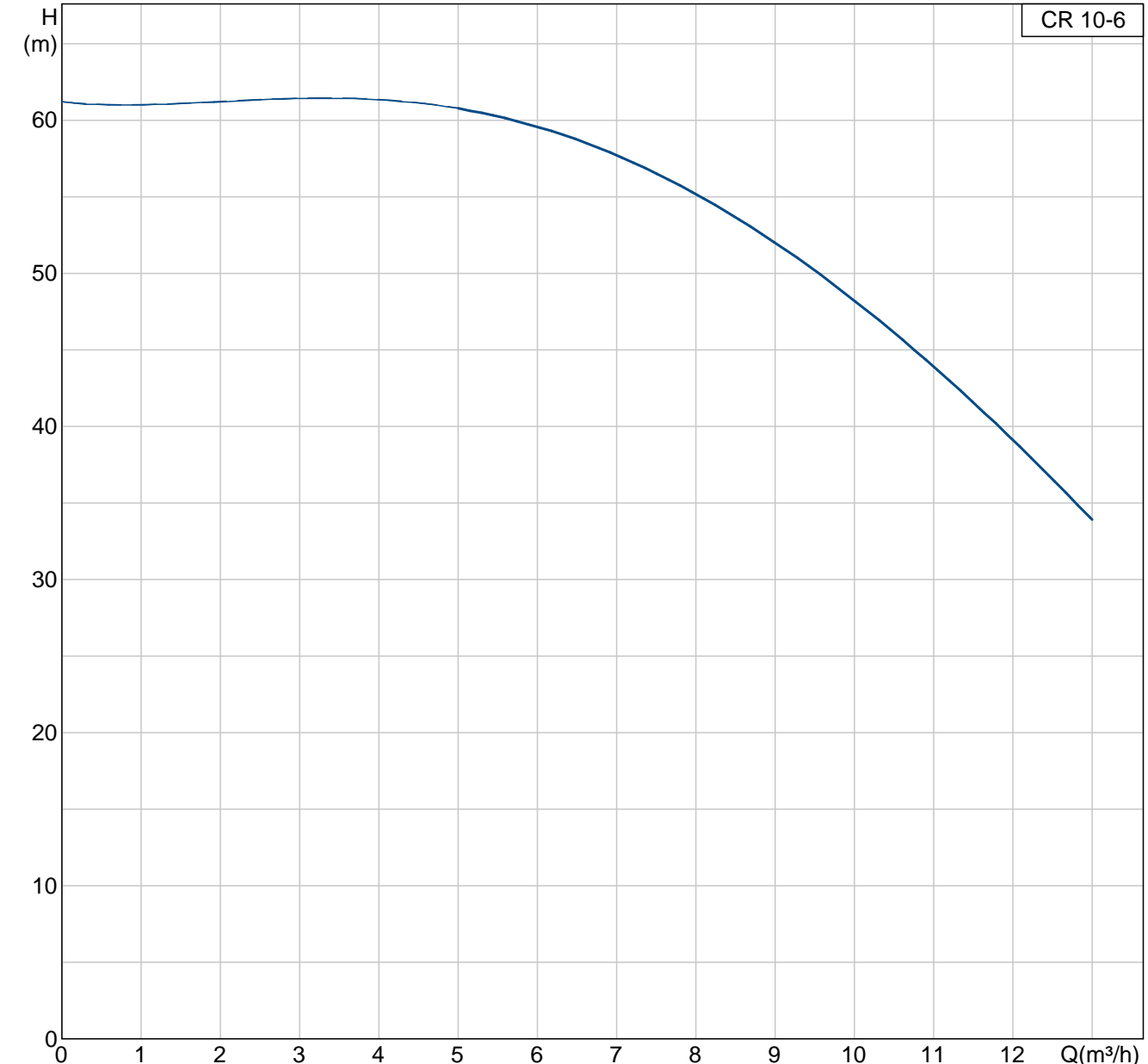
Position	Qty.	Description	Single Price
		<p>Rated voltage: 3 x 220-240 D / 380-415 Y V Rated current: 7.7 / 4.45 A Starting current: 850-950 % Cos phi - power factor: 0,89-0,87 Rated speed: 2890-2910 rpm Enclosure class (IEC 34-5): IP55 Insulation class (IEC 85): F</p> <p>Others: Net weight: 47 kg Gross weight: 51 kg Shipping volume: 0.1 m³</p>	

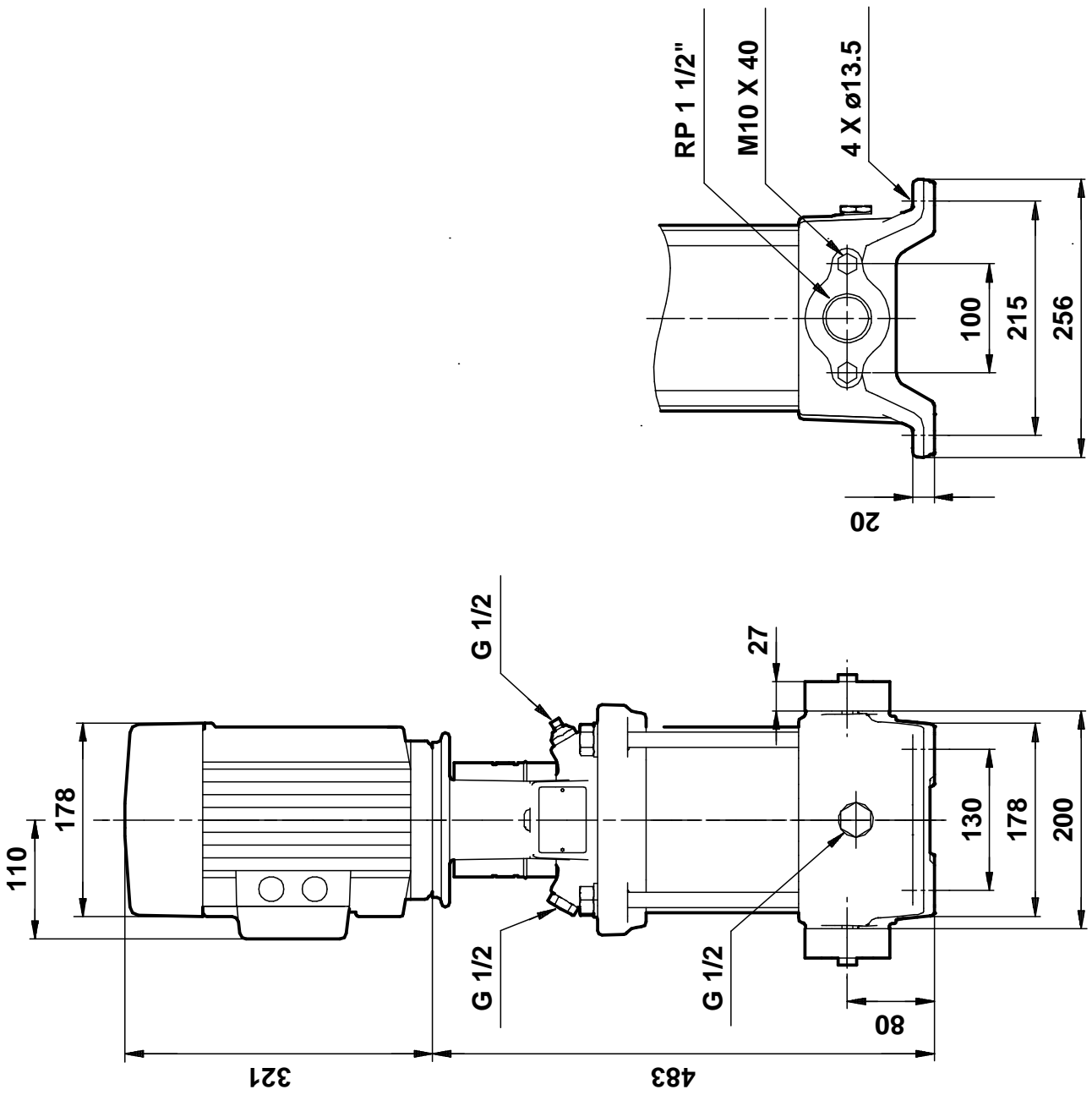
Description	Value
Product name:	CR 10-6 A-A-A-E HQQE
Product No:	96500984
EAN number:	5700396213033
Technical:	
Speed for pump data:	2899 rpm
Rated flow:	10 m ³ /h
Rated head:	48.3 m
Impellers:	06
Shaft seal:	HQQE
Approvals on nameplate:	CE
Curve tolerance:	ISO 9906 Annex A
Stages:	06
Pump version:	A
Model:	A
Materials:	
Pump housing:	Cast iron EN-JL1030 DIN W.-Nr. A48-30 B ASTM
Impeller:	Stainless steel 1.4301 DIN W.-Nr. 304 AISI
Material code:	A
Code for rubber:	E
Installation:	
Maximum ambient temperature:	60 °C
Max pressure at stated temp:	16 / 120 bar / °C 16 / -20 bar / °C
Flange standard:	Oval
Connect code:	A
Pipe connection:	Rp 1 1/2
Flange size for motor:	FT115
Liquid:	
Liquid temperature range:	-20 .. 120 °C
Electrical data:	
Motor type:	90LC
Efficiency class:	1
Number of poles:	2
Rated power - P2:	2.2 kW
Power (P2) required by pump:	2.2 kW
Mains frequency:	50 Hz
Rated voltage:	3 x 220-240 D / 380-415 Y V
Rated current:	7.7 / 4.45 A
Starting current:	850-950 %
Cos phi - power factor:	0,89-0,87
Rated speed:	2890-2910 rpm
Enclosure class (IEC 34-5):	IP55
Insulation class (IEC 85):	F
Motor protec:	NONE
Motor No:	85D05908
Others:	
Net weight:	47 kg
Gross weight:	51 kg
Shipping volume:	0.1 m ³



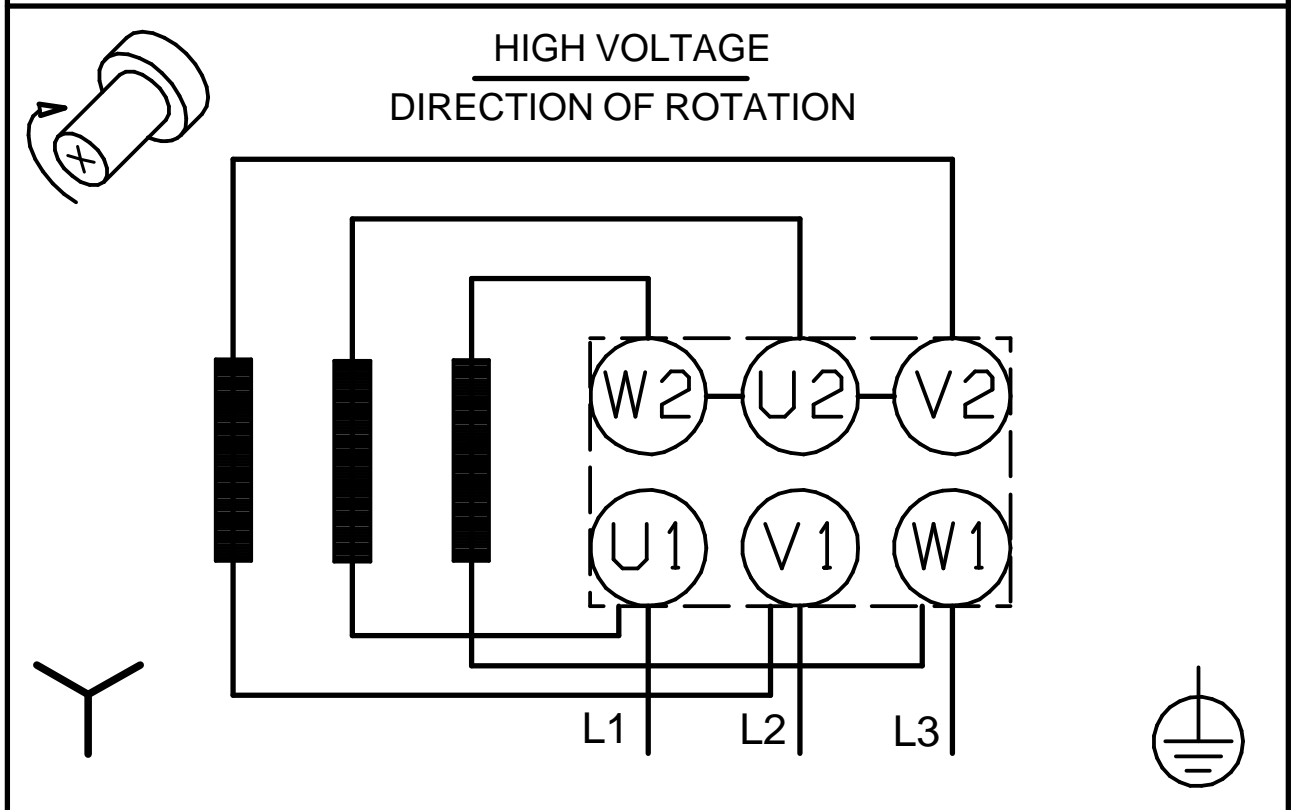
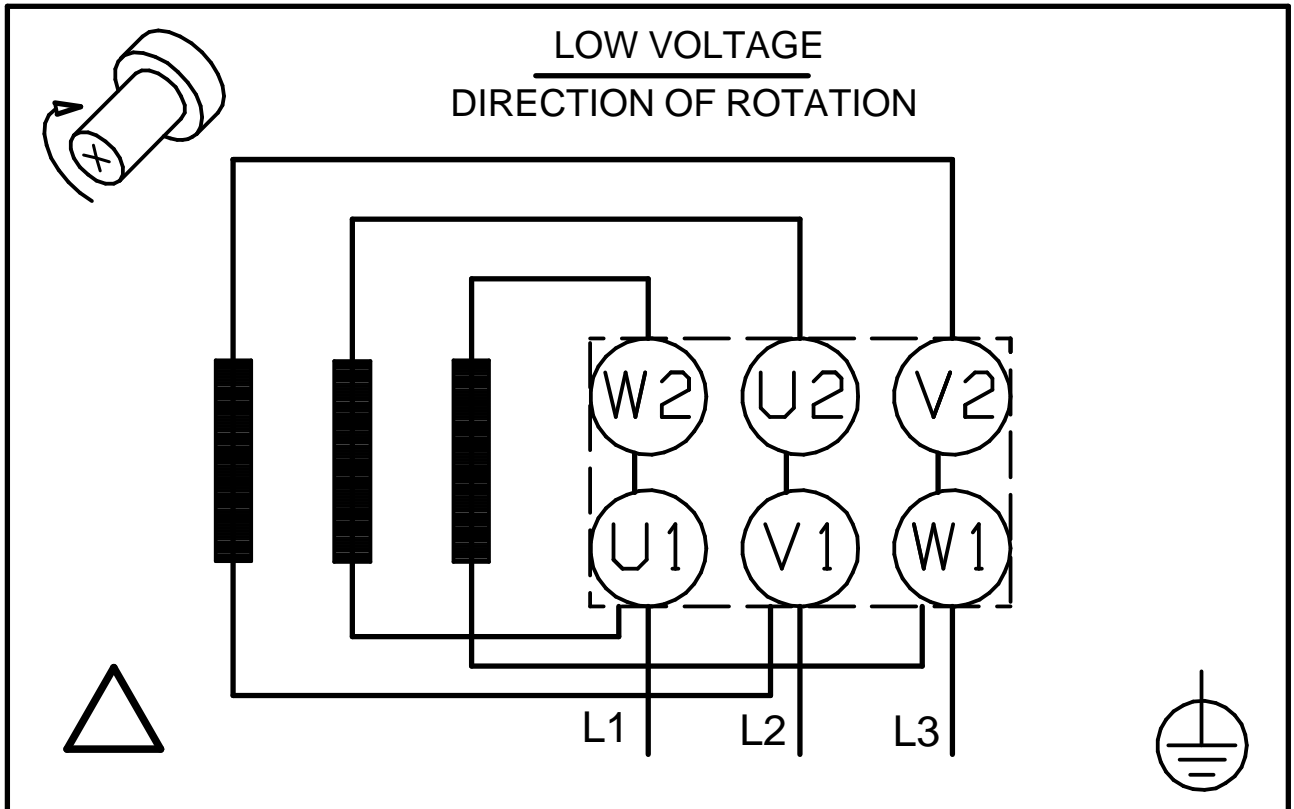
96500984 CR 10-6

CR 10-6





Note! All units are in [mm] unless others are stated.



Note! All units are in [mm] unless others are stated.